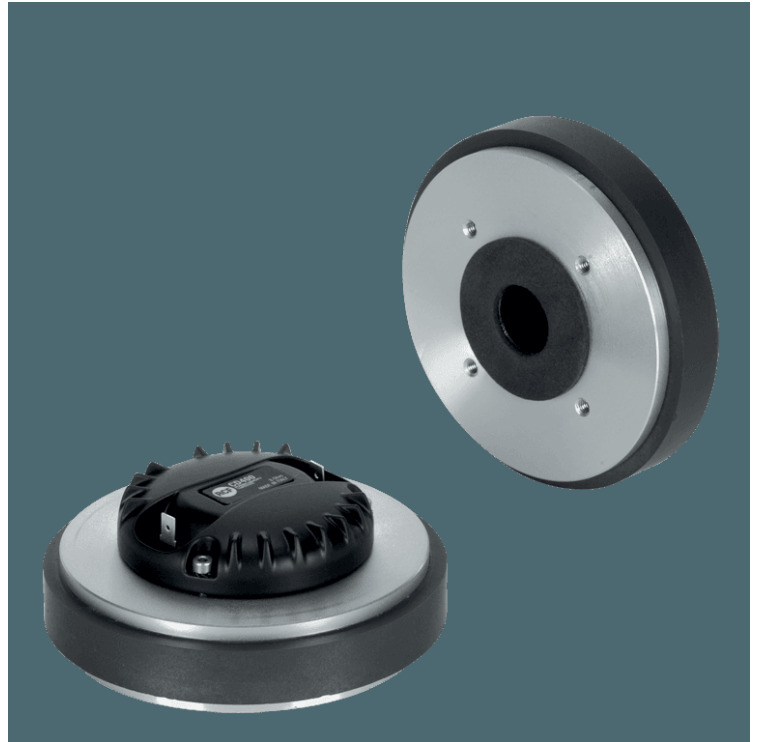


CD400

DRIVER

DESCRIPTION

The CD400 is a high performance 1.75-inch diaphragm ceramic compression driver with a 1.0 inch exit throat. The diaphragm is precision formed from polyester. The voice coil assembly is designed using high temperature Kapton former, rectangular profile copper clad aluminum wire and assembled using advanced, specially formulated adhesives.



FEATURES

- 1.75-inch Diaphragm, 1.0-inch Exit Throat / Polyester Compression Driver
- 100W continuous program power handling
- Frequency range: 1200Hz - 20kHz
- 2-slot optimized geometry phase plug
- Polyester diaphragm
- Vented suspension system
- Ceramic magnet assembly

TECHNICAL SPECIFICATIONS

General specifications

| | |
|---------------------------------|---------------------|
| Exit Throat Diameter: | 1.0 inch / 25 mm |
| Related Impedance: | 8 ohm |
| Program Power (watt): | 100 W |
| Power handling capacity (watt): | 50 W |
| Sensitivity: | 109 dB |
| Frequency range: | 1200 - 20000 Hz |
| Diaphragm Material: | Polyester |
| Suspension Material: | Polyester |
| Suspension Design: | Flat |
| Minimum Impedance (ohm): | 6.50 ohm |
| Voice Coil Diameter: | 1.75 inch / 44 mm |
| Voice Coil Material: | Edgewound Aluminium |
| Voice Coil Former Design: | Straight - Kapton |
| Number of layers: | 1 |
| Kind of layers: | outside |
| Flux Density: | 1.8 T |
| Phase Plug Design: | 2 slot |
| Phase Plug Material: | PP Composite |
| Magnetics: | Ceramic |

Thiele - small parameters

| | |
|-------------------------|------------|
| Bl factor (Bl) (T x m): | 7.50 T x m |
|-------------------------|------------|

Mounting informations

| | |
|-------------------|--------------------------------|
| Overall diameter: | 134 mm / 5.28 inches |
| Overall height: | 52 mm / 2.05 inches |
| Mounting: | 4 x 6 mm threaded holes at 90° |

Standard compliance

| | |
|-------------|-----|
| CE marking: | Yes |
|-------------|-----|

Size

| | |
|---------|--------------------|
| Weight: | 2.46 kg / 5.42 lbs |
|---------|--------------------|

Shipping informations

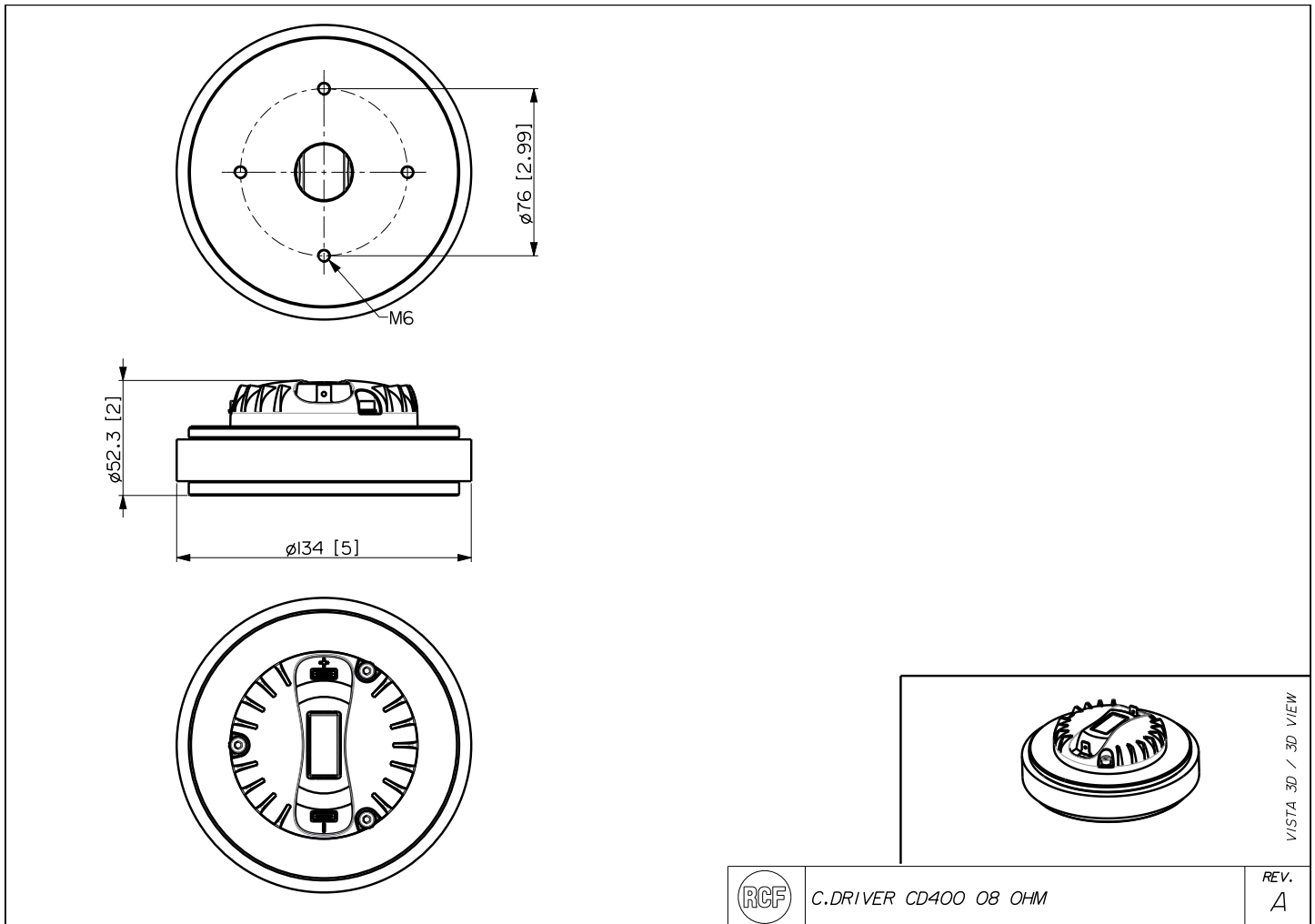
| | |
|-----------------|----------------------|
| Package Height: | 88 mm / 3.46 inches |
| Package Width: | 172 mm / 6.77 inches |
| Package Depth: | 196 mm / 7.72 inches |
| Package Weight: | 2.63 kg / 5.8 lbs |

PART NUMBER

- **15129047**

CD400

8ohm



C.DRIVER CD400 08 OHM

REV.
A

VISTA 3D / 3D VIEW

